

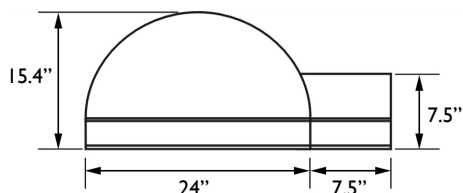
MINIMUM ORDER QUANTITY: 50
LEAD TIME: 16 WEEKS

NORIBACHI

AREALIGHT.X

All products feature Noribachi's exclusive Bespoke Engineered and Specifically Tailored (BEST) manufacturing methodology.

PRODUCT



CATALOG #:	TYPE:
PROJECT:	
COMMENTS:	DATE:
PREPARED BY:	

Product Information

The Arealight.X is a modern LED fixture that delivers superior illumination.

This LED lighting fixture features heavy duty die-cast aluminum housing and a heat and impact resistant tempered glass lens.

Applications: Hotels, Municipal Parks, Parking Lots, Recreational Areas and a variety of other large outdoor lighting applications.

Performance Summary

Lumens Range:	4,431lm – 53,170 lm
Lumens Per Watt (Typical):	141
Light Engine:	L70 Rated Lifetime of 100,000+ hours.
CRI:	Minimum 70 CRI. Custom CRI available upon request.
CCT (Typical):	3000K, 4000K, 5700K
Manufactured in the U.S. with parts from U.S. and imported.	

Fixture Information

Housing:	Black / Custom
Lens:	Tempered Glass
Mounting:	Pole Top (ARM)
Diffusion:	None

Specifications

UL / cUL Listed:	Wet Locations
EPA Rating:	2.37 (Gross), 1.19 (Drag), 1.54 (Net)
Height:	35"
Width:	15"
Mount Width:	3.56"
Weight:	32 lbs

Electrical System Characteristics / Data

Standard AC input:	120-277 VAC
EMI filter:	47CFR, part 2, part 15
Power factor:	> 0.9
Total harmonic distortion:	< 20%
Surge protection:	IEC/EN 61000-4-5 EMC test standard.

Electrical characteristics and performance data verified by Nationally Recognized Testing Labs (NRTL). For full reports and results, visit www.noribachi.com/reports.

Ordering Information

Sample Catalog Number: HEX-252-B-WW-MT-ALX

LIGHT ENGINE	DRIVE CURRENT	COLOR TEMPERATURE	VOLTAGE	FIXTURE CODE	OPTIONAL UPGRADES	OPTIONAL BEAM SPREAD AND TYPE DISTRIBUTION
HEX-021 HEX-042 HEX-063 HEX-063 HEX-084 HEX-105 HEX-126 HEX-168 HEX-210 HEX-252	B B B B B B B B B B	CW – COOL WHITE (5700K TYPICAL) NW – NEUTRAL WHITE (4000K TYPICAL) WW – WARM WHITE (3000K TYPICAL)	MT	ALX – AREALIGHT.X	SGR1 – 120-277V SURGE PROTECTOR SGR2 – 480V SURGE PROTECTOR PUL – PULSE WIRELESS CONTROLLER 010V – 1-10V DIMMING STEP – STEP DIMMING (UP TO 100W) STEP100 – STEP DIMMING (100-299W) STEP300 – STEP DIMMING (>300W) LVDIM – LINE VOLT DIMMING (<100W) COL [RAL] – CUSTOM FIXTURE COLOR COAT – MARINE GRADE FIXTURE COATING EPOXY – EPOXY COATING	80D – OPTIONAL 80° BEAM SPREAD T1 – OPTIONAL TYPE 1 DISTRIBUTION T2 – OPTIONAL TYPE 2 DISTRIBUTION T3 – OPTIONAL TYPE 3 DISTRIBUTION T4 – OPTIONAL TYPE 4 DISTRIBUTION TRS or TLS – OPTIONAL RIGHT OR LEFT SLANTED DISTRIBUTION

Warranty:

Five-Year Limited Warranty. Optional 10-Year Manufacturer's Warranty Available. Full Warranty Terms Available At www.noribachi.com/products/warranty

WHEN APPROVED, THE SPECIFICATIONS OUTLINED IN THIS SPEC SHEET SHALL BECOME THE SPECIFICATION FOR THE MATERIAL TO BE DELIVERED BY NORIBACHI ON THE CITED PROJECT. AN AMENDED SPEC SHEET CAN BE PROVIDED BUT ONLY AFTER WRITTEN APPROVAL BY THE CUSTOMER IS RECEIVED. THIS DOCUMENT IS THE PROPERTY OF NORIBACHI AND CAN ONLY BE USED IN CONNECTION WITH MATERIALS FURNISHED BY NORIBACHI.

©2016



MINIMUM ORDER QUANTITY: 50
LEAD TIME: 16 WEEKS

NORIBACHI

AREALIGHT.X

All products feature Noribachi's exclusive Bespoke Engineered and Specifically Tailored (BEST) manufacturing methodology.

CATALOG #:

TYPE:

PROJECT:

COMMENTS:

DATE:

PREPARED BY:

ELECTRICAL

Construction

Heavy duty die-cast aluminum with polyester power paint finish, and heat and impact resistant tempered glass.

Optics

High brightness, high efficiency LEDs. Color temperature options include Cool White (5700K typical), Neutral White (4000K typical) Warm White (3000K typical) with minimum 70 CRI. Custom RGBW colors and tight bins available. 120° beam angle standard. 80° beam angle option available. T1 – T4 Light Distribution available. Optional Right (TRS) or Left Slanted (TLS) Distribution available.

Controls

Control options include Pulse Wireless Controller (PUL), 120-277V (SGR1), 480V (SGR2) Surge Protectors. 0-10V (010V), Line Volt (LVDIM) and Step (STEP, STEP100, STEP300) Dimming functionality available.

Mounting

Pole Top mounts accommodates 3" poles or tenons.

Driver

Available in B drive current (525 mA). Highly reliable. Suitable for dry, damp and wet locations. Compliant to worldwide safety regulations for lighting.

Testing Compliance

UL 1598 Issued: 2008/09/17 Ed:3 Rev:2012/10/17 UL Standard for Safety Luminaires CSA C22.2#250.0 Issued: 2008/09/17 Ed:3 Luminaires; General Instruction No.1 2010/01/11, General Instruction No.2 2012/10/17.

Electrical System

Surge protection meets 10KV/5KA per ANSI/IEEE62.41. Driver meets maximum harmonic distortion (THD) of 20% and is ROHS compliant. Power Factor = > 0.9.

Ambient Temperature

-40°C to +65°C (-40°F to + 149°F).

Electrical Load

LIGHT ENGINE	DRIVE	DRIVE CURRENT (AMPS@120V)	DRIVE CURRENT (AMPS@277V)	DRIVE CURRENT (AMPS@480V)	SYSTEM POWER* (WATTS)
HEX-021	B	0.26	0.11	0.07	31.46
HEX-042	B	0.53	0.23	0.13	63.02
HEX-063	B	0.79	0.34	0.20	94.70
HEX-084	B	1.05	0.46	0.26	126.48
HEX-105	B	1.32	0.57	0.33	158.38
HEX-126	B	1.59	0.69	0.40	190.38
HEX-168	B	2.12	0.92	0.53	254.72
HEX-210	B	2.66	1.15	0.67	319.50
HEX-252	B	3.21	1.39	0.80	384.72
*Ideal Wattage					

Operating Characteristics (Typical @5700K CCT)

LIGHT ENGINE	DRIVE	LUMENS (T5)	INPUT POWER (WATTS)	LUMENS PER WATT	REPLACES
HEX-021	B	4,431	31.46	140.86	75-175W
HEX-042	B	8,862	63.02	140.62	125-300W
HEX-063	B	13,293	94.70	140.37	200-400W
HEX-084	B	17,723	126.48	140.13	300-525W
HEX-105	B	22,154	158.38	139.88	400-750W
HEX-126	B	26,585	190.38	139.64	550-800W
HEX-168	B	35,447	254.72	139.16	725-1200W
HEX-210	B	44,308	319.50	138.68	1000-1450W
HEX-252	B	53,170	384.72	138.20	1250-1700W

Manufacturing

Manufactured in beautiful Harbor City, CA. ARRA Compliant. NAFTA Compliant. Test and burn-in of 100% of all luminaires before shipment. No less than 8-years experience in manufacturing LED-based products.

Note

Specifications subject to change without notice.

Actual performance may differ as a result of end-user environment application. Actual wattage may differ by +/- 8%.

WHEN APPROVED, THE SPECIFICATIONS OUTLINED IN THIS SPEC SHEET SHALL BECOME THE SPECIFICATION FOR THE MATERIAL TO BE DELIVERED BY NORIBACHI ON THE CITED PROJECT. AN AMENDED SPEC SHEET CAN BE PROVIDED BUT ONLY AFTER WRITTEN APPROVAL BY THE CUSTOMER IS RECEIVED. THIS DOCUMENT IS THE PROPERTY OF NORIBACHI AND CAN ONLY BE USED IN CONNECTION WITH MATERIALS FURNISHED BY NORIBACHI.

©2016



MINIMUM ORDER QUANTITY: 50
LEAD TIME: 16 WEEKS

NORIBACHI

AREALIGHT.X

All products feature Noribachi's exclusive Bespoke Engineered and Specifically Tailored (BEST) manufacturing methodology.

CATALOG #:

TYPE:

PROJECT:

COMMENTS:

DATE:

PREPARED BY:

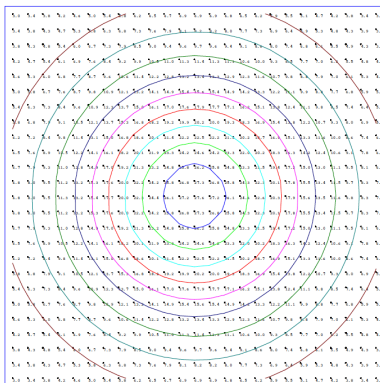
PERFORMANCE / DISTRIBUTION

Power And Lumens By Light Engine

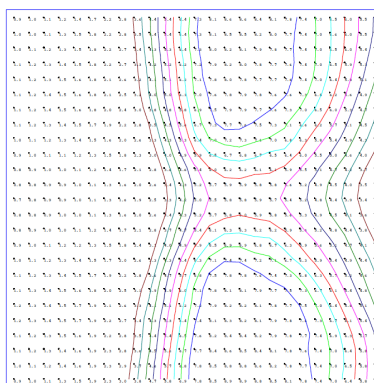
DISTRIBUTION							
LIGHT ENGINE	DRIVE	CCT	T1 (LUMENS)	T2 (LUMENS)	T3 (LUMENS)	T4 (LUMENS)	T5 (LUMENS)
HEX-021	B	5700	4,354	3,450	4,209	3,988	4,431
HEX-042	B	5700	8,708	6,899	8,419	7,976	8,862
HEX-063	B	5700	13,062	10,349	12,628	11,963	13,293
HEX-084	B	5700	17,416	13,799	16,837	15,951	17,723
HEX-105	B	5700	21,770	17,248	21,047	19,939	22,154
HEX-126	B	5700	26,124	20,698	25,256	23,927	26,585
HEX-168	B	5700	34,832	27,597	33,674	31,902	35,447
HEX-210	B	5700	43,540	34,496	42,093	39,878	44,308
HEX-252	B	5700	52,247	41,396	50,512	47,853	53,170

Type Distribution HEX-252

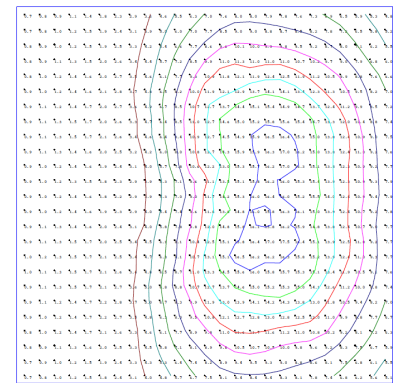
T-1



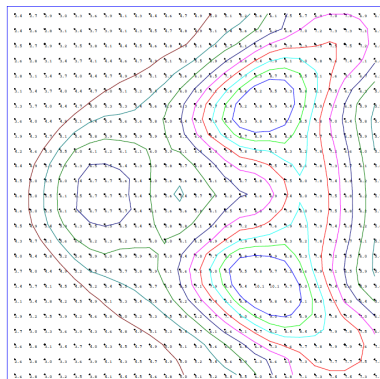
T-2



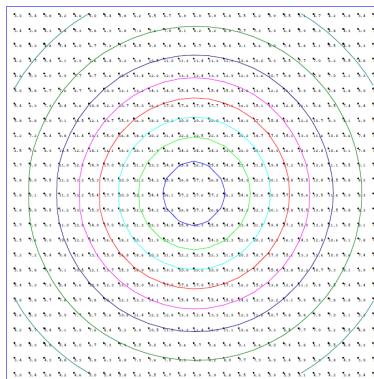
T-3



T-4



T-5



Distribution

•120° Standard Beam Spread.

•80° Optional Beam Spread available.

•Left (TLS) Slant and Right (TRS) Slant available.

•Other Light Engine Type Distribution available upon request.

•IES Type Distributions are generated in an open space.

•Light Distribution images are mounted at 10 feet.

WHEN APPROVED, THE SPECIFICATIONS OUTLINED IN THIS SPEC SHEET SHALL BECOME THE SPECIFICATION FOR THE MATERIAL TO BE DELIVERED BY NORIBACHI ON THE CITED PROJECT. AN AMENDED SPEC SHEET CAN BE PROVIDED BUT ONLY AFTER WRITTEN APPROVAL BY THE CUSTOMER IS RECEIVED. THIS DOCUMENT IS THE PROPERTY OF NORIBACHI AND CAN ONLY BE USED IN CONNECTION WITH MATERIALS FURNISHED BY NORIBACHI.

©2016



MINIMUM ORDER QUANTITY: 50
LEAD TIME: 16 WEEKS

NORIBACHI

AREALIGHT.X

All products feature Noribachi's exclusive Bespoke Engineered and Specifically Tailored (BEST) manufacturing methodology.

CATALOG #:

TYPE:

PROJECT:

COMMENTS:

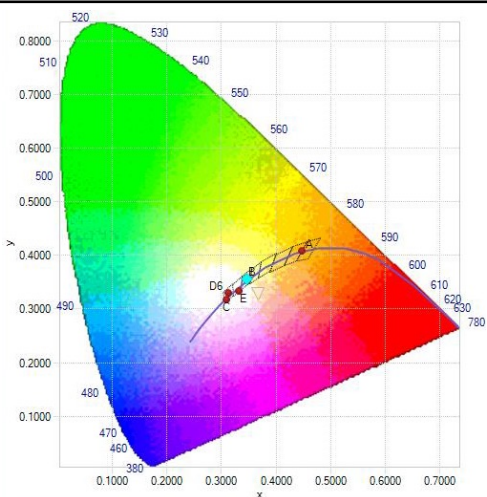
DATE:

PREPARED BY:

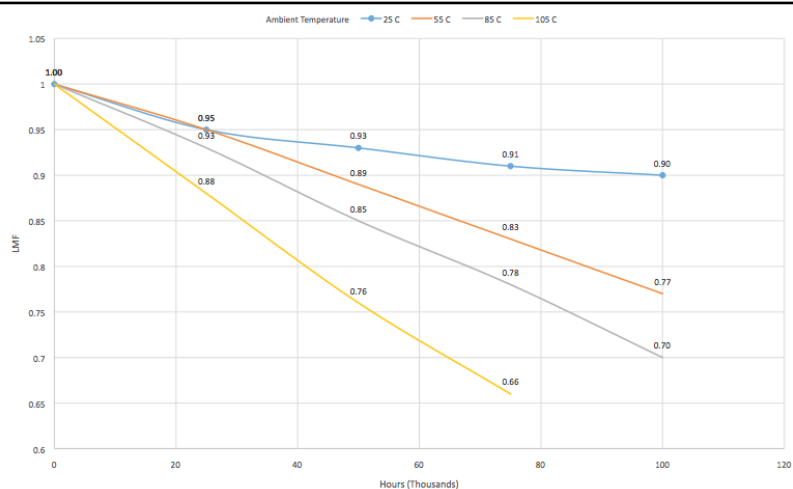
PERFORMANCE / DISTRIBUTION

CIE LUV BINNING CURVE

LIN-140 CIE 1932 - 2 Degree



Lumen Depreciation Chart



Lumen Maintenance Factors (B Drive)

AMBIENT	INITIAL LMF	25K HR PROJECTED LMF	50K HR PROJECTED LMF	75K HR PROJECTED LMF	100K HR PROJECTED LMF
25°C	1.00	0.95	0.93	0.91	0.90
55°C	1.00	0.95	0.89	0.83	0.77
85°C	1.00	0.93	0.85	0.78	0.70
105°C	1.00	0.88	0.76	0.66	n/a

Each temperature has an independent initial value. In accordance with IESNA TM021011, Projected Values represent interpolated value based on time durations that are within six times (6X) the IESNA LM-80-08 total test duration (in hours) for the device under testing (DUT) i.e. the packaged LED chip). In accordance with IESNA TM-21-11, Calculated Values represent time durations that exceed six times (6X) the IESNA LM-80-08 total test duration (in hours) for the device under testing (DUT) i.e. the packaged LED chip).

Luminaire EPA Chart

	Single	0.5
	ND-180°	1.0
	ND-90°	0.8
	NT-90°	1.7
	NT-120°	1.7
	NQ-90°	1.9

Note: Mounting changes fixture EPA. Please contact Noribachi for additional information.

Lumen Multiplier

AMBIENT TEMPERATURE	LUMEN MULTIPLIER
10°C	1.032
15°C	1.021
25°C	1.000
40°C	0.968
50°C	0.946

WHEN APPROVED, THE SPECIFICATIONS OUTLINED IN THIS SPEC SHEET SHALL BECOME THE SPECIFICATION FOR THE MATERIAL TO BE DELIVERED BY NORIBACHI ON THE CITED PROJECT. AN AMENDED SPEC SHEET CAN BE PROVIDED BUT ONLY AFTER WRITTEN APPROVAL BY THE CUSTOMER IS RECEIVED. THIS DOCUMENT IS THE PROPERTY OF NORIBACHI AND CAN ONLY BE USED IN CONNECTION WITH MATERIALS FURNISHED BY NORIBACHI.

©2016



MINIMUM ORDER QUANTITY: 50
LEAD TIME: 16 WEEKS

NORIBACHI

AREALIGHT.X

All products feature Noribachi's exclusive Bespoke Engineered and Specifically Tailored (BEST) manufacturing methodology.

CATALOG #:	TYPE:
PROJECT:	
COMMENTS:	DATE:
PREPARED BY:	

OPTIONAL UPGRADES

DIMMING

ORDER CODE: 010V
ORDER CODE: STEP
ORDER CODE: STEP100
ORDER CODE: STEP300
ORDER CODE: LVDIM

Appearance And Specifications:

- 010V = 1 – 10V Dimming
- STEP = Step Dimming
- STEP100 = Step Dimming
- STEP300 = Step Dimming
- LVDIM= Step Dimming



SURGE PROTECTOR

ORDER CODE: SGR1
ORDER CODE: SGR2

Appearance And Specifications:

- 120-277V Surge Protector
- 480V Surge Protector



CUSTOM FIXTURE COLOR

ORDER CODE: COL-[RAL]

Appearance And Specifications:

- Choose a custom color for your fixture.
- RAL color code must be provided.



MARINE GRADE FIXTURE COATING

ORDER CODE: COAT

Appearance And Specifications:

- Add a Marine Grade coating to your fixture.
- Coating appearance is green.



EPOXY COATING

ORDER CODE: EPOXY

Appearance And Specifications:

- Add epoxy coating to your fixture.



PULSE WIRELESS CONTROLLER

ORDER CODE: PUL

Appearance And Specifications:

- Lighting Control System
- Wall mounted or Portable



WHEN APPROVED, THE SPECIFICATIONS OUTLINED IN THIS SPEC SHEET SHALL BECOME THE SPECIFICATION FOR THE MATERIAL TO BE DELIVERED BY NORIBACHI ON THE CITED PROJECT. AN AMENDED SPEC SHEET CAN BE PROVIDED BUT ONLY AFTER WRITTEN APPROVAL BY THE CUSTOMER IS RECEIVED. THIS DOCUMENT IS THE PROPERTY OF NORIBACHI AND CAN ONLY BE USED IN CONNECTION WITH MATERIALS FURNISHED BY NORIBACHI.

©2016

