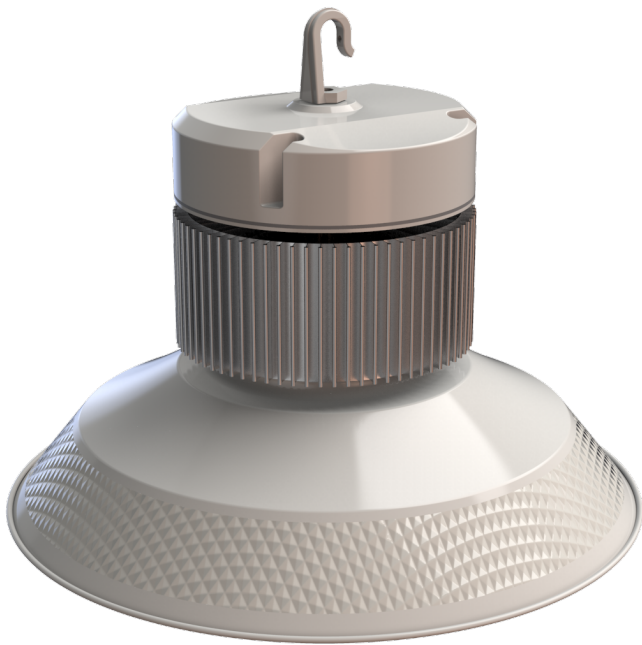
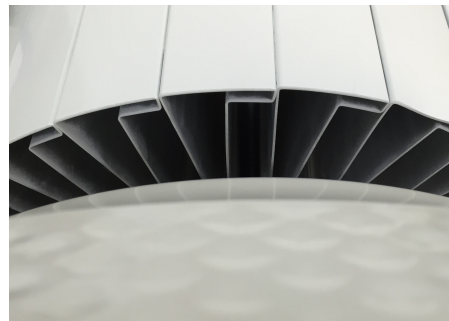
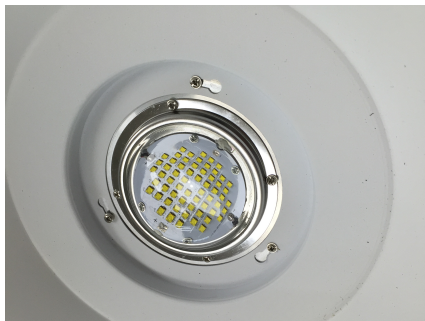
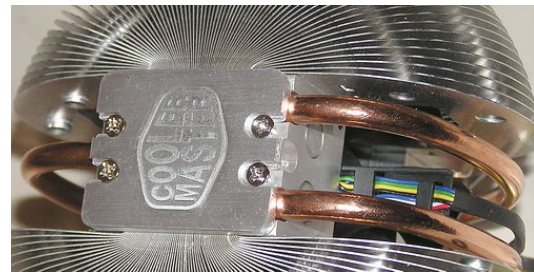


LED High Bay




"The only ethyl cooling technology in the LED market...." Efficiency Today



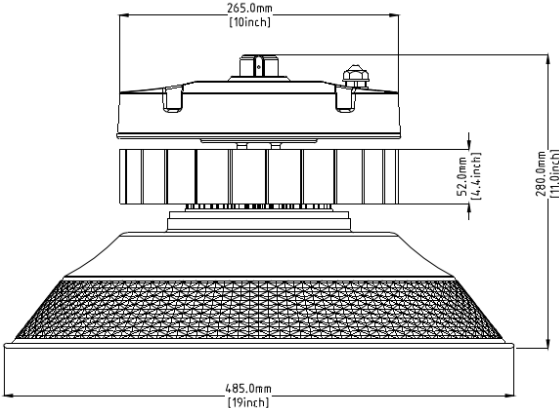
Optional
PC Reflector

Specifications

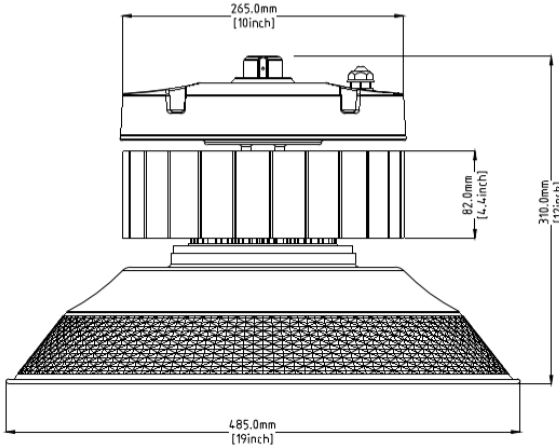
Wattage:	100W	150W	200W
Model Number:	AE-L-HB-100	AE-L-HB-150	AE-L-HB-200
DLC #:	JR-GK03100-A-100W	JR-GK03100-B-150W	JR-GK03100-C-200W
DLC Partner:	JOLIGHTING		
UL & CUL Number	E334687		
Certifications:			
Voltage:	120-277V		
Power Factor:	0.98		
Frequency:	50/60Hz		
Lumens Efficiency:	100LM/W		
Kelvin (CCT):	4000K/5000K/5700K		
CRI:	80+		
IP Rating:	IP65		
Lens:	Glass		
Materials:	Die Cast Aluminum		
Finish:	White (Default)		
LM70 Life Time:	100,000		
Dimming Availability:	NA. (Default)		
Warranty:	5 Years		
Temperature Range:	-34°C ~ 54°C (-30°F ~ 120°F)		
Weight:	6.1KG 13.4LB	6.8KG 15.0LB	7.1KG 15.7LB
Packaging Dimensions:	505*505*315mm 19.9*19.9*12.4INCH	505*505*345mm 19.9*19.9*13.6INCH	505*505*375mm 19.9*19.9*14.8INCH
Replacement Wattage:	400W	600W	800W

Dimensions

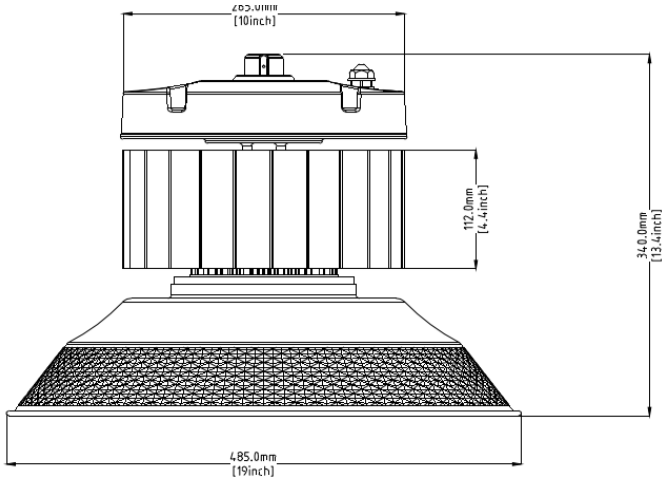
100W



150W



200W



User Guide

Note:

Please read this entire manual to fully understand and safely use the luminaire. The products can be used at the voltage of 100-277V AC, 50/60HZ, suitable for indoor and outdoor, moisture proof and dust proof. Specifications are subject to change without notice. Please visit www.altechefficiency.com for the most recent product information.

Unpacking:

1. Unpack and carefully examine the product.
2. Report any damage and save all packing materials if any part(s) were damaged during shipping.
3. Do not attempt to use the fixture if it is damaged.

Before You Install:

1. CONSULT A QUALIFIED ELECTRICIAN TO ENSURE CORRECT BRANCH CIRCUIT CONDUCTOR.
2. The product should be installed and operated by a qualified electrician or technician in accordance with relevant local codes.
3. Risk of electric shock. Ensure that main power source is off when wiring or soldering the sections of the product.

Maintenance:

1. Disconnect the product from the power supply prior to cleaning.
2. Use a dry or slightly moistened cloth for cleaning.
3. Never use any chemicals or abrasive materials for cleaning.

Installation Instructions:

1. Locate the mounting hook located inside the packaging.
2. Screw in hook to the top of fixture.
3. Hang fixture from hook to a secure anchorage.

