



Pictured with motion sensor

Description

The ALHS-L area fixture is the perfect LED to replace all your high wattage HID area lights. With a very high lumen output, it will be sure to give any project more than enough coverage.

DLC Partner: **Ultron Industries**



Applications

| | | |
|------------------|----------------|---------------|
| Auto Dealerships | Outdoor Courts | Outdoor Malls |
| Parking Lots | Sports Fields | Public Parks |

Details

| | |
|---------------|---------------------------------|
| IP Rating | IP67 |
| EPA Rating | 0.9 |
| Materials | Aluminum |
| Lens | Polycarbonate |
| LM70 Life | 100,000 Hours |
| Warranty | 10 Years |
| CRI | 70+ |
| Certification | UL, DLC Premium, FCC, CE, RoHS |
| Driver Man. | YG (100-277V), Mean Well (480V) |
| Chip Man. | Philips |

Electrical

| | |
|-----------------|-------------------------------------|
| Power Factor | 0.99 |
| Frequency | 50/60 Hz |
| Max THD | 10% |
| Operating Temp. | -30° F to 150° F -34° C to 65° C |
| Dimming | 3 in 1 (Resistance, PWM, 1-10V) |

| ALTECH MODEL #: | AE-L-ALHS-L-150-165 | AE-L-ALHS-L-240-165 | AE-L-ALHS-L-300-165 | AE-L-ALHS-L-400-165 |
|-----------------|---------------------|---------------------|---------------------|---------------------|
| DLC #: | U-HALL-150 | U-HALL-240 | U-HALL-300 | U-HALL-400 |
| Input Wattage: | 150W | 240W | 300W | 400W |
| Lumen Efficacy: | 165 lm/W | | | |
| Lumen Output: | 26,750 lm | 40,800 lm | 51,000 lm | 66,000 lm |

| ALTECH MODEL #: | AE-L-ALHS-L-150-185 | AE-L-ALHS-L-240-185 | AE-L-ALHS-L-300-185 | AE-L-ALHS-L-400-185 |
|-----------------|---------------------|---------------------|---------------------|---------------------|
| DLC #: | U-HALL-150 | U-HALL-240 | U-HALL-300 | U-HALL-400 |
| Input Wattage: | 150W | 240W | 300W | 400W |
| Lumen Efficacy: | 185 lm/W | | | |
| Lumen Output: | 27,750 lm | 44,400 lm | 55,500 lm | 74,000 lm |

Ordering Information

Example: AE-L-ALHS-L-400-185-50K-T4-1-TR-P-BZ

| Wtg | Lumen Pckge | Color Temp. | Distribution | Input Voltage | Mounting | Options | Finish |
|-----|-------------|--------------|--------------|--|----------------------|---|--------------|
| 150 | 165 lm/W* | 30K - 3000K | T3 - Type 3* | 1 - 100-277V* | A - 6" Extended Arm* | P - Photocell | BZ - Bronze* |
| 240 | 185 lm/W | 40K - 4000K | T4 - Type 4 | 2 - 480V | SF - Slip Fitter | MS - Motion Sensor | BL - Black |
| 300 | | 50K - 5000K* | T5 - Type 5 | | TR - Trunnion | EI - Emergency Inverter | WH - White |
| 400 | | 57K - 5700K | | | | (X)P - (X)-Pin Twist-Lock Base (X = select one: 3,5, or 7) | GR - Gray |
| | | | | (Warranty is reduced to 5 years for 480V models) | | WP(X) - Additional Whip (X = specified length in ft.; 1.67' is standard) | SP - Other |

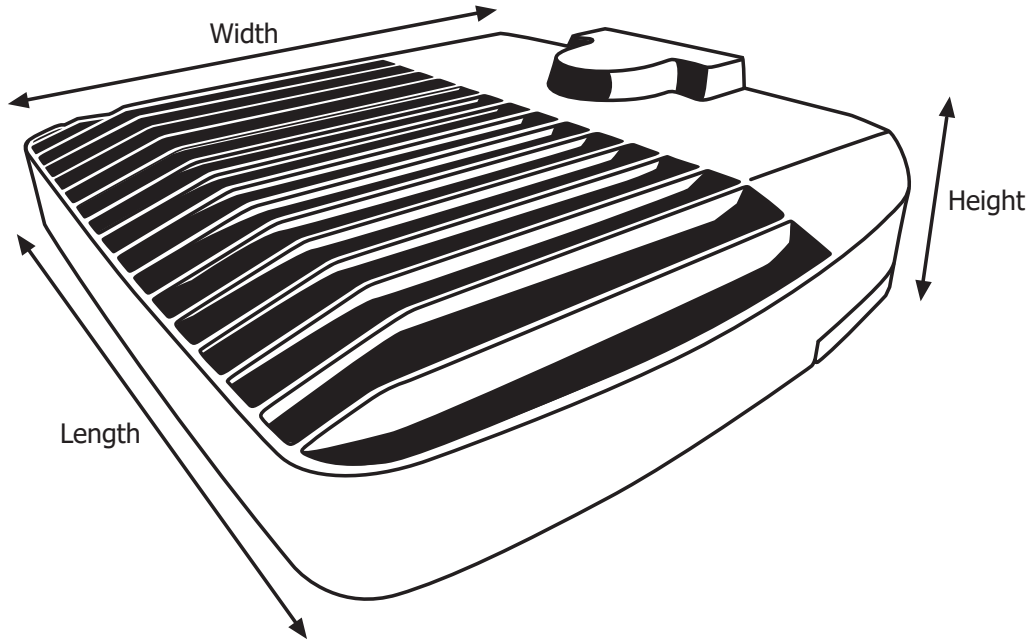
*Standard

Additional Notes

- Only 5000K, 120-277V in BRONZE are stocked locally, check for ETA's
- Life is more than 27 years operating 10 hours a day, based on LM70 standards
- Hot-start delays: .08 seconds (YG driver), 1 second (Mean Well driver)
- Additional charges apply to custom colors



Fixture Dimensions and Weight

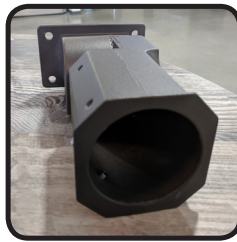


| Length | Width | Height | Weight |
|-----------|----------|---------|----------|
| 19.75 in. | 16.8 in. | 4 in. | 25 lb. |
| 502 mm. | 427 mm. | 102 mm. | 11.3 kg. |

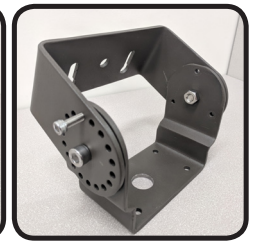
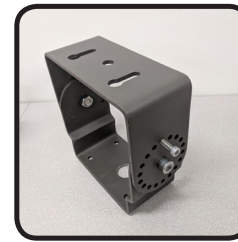
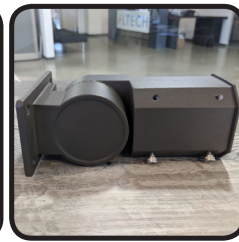
Mounting Options



6-Inch Arm Mount



Slip Fitter Mount



Trunnion Mount

Fixture-to-Mount Installation

1. Match screw holes on the mount with the fixture.
(Refer to image on the right)
2. Run the wire from the fixture through mount.
3. Hand-tighten the screws into place.
4. Tighten the screws with a tool to secure it.
5. Installation complete.

