



Description

Altech's Mammoth Series Low Bay Canopy, an upgrade from the Slim Series, has a 10-year wrap-around warranty. It is sure to illuminate adequately.



Applications

Warehouses
Parking Garages

Low Ceilings
Underpasses

Hallways
Tunnels

Details

IP Rating	IP67
Materials	Die Cast Aluminum
Lens	Polycarbonate
L70 Life	100,000 Hours
Warranty	10 Years
CRI	80+
Qualification	UL, DLC 4.3, FCC, CE, RoHS
Driver Man.	YG
Chip Man.	Philips

Electrical

Power Factor	0.99
Frequency	50/60 Hz
Max THD	15%
Operating Temp.	-40° F to 130° F -40° C to 54° C
Dimming	1-10V

DLC #:	U-LPCN-28	U-LPCN-40	U-LPCN-60	U-LPCN-90
MODEL #:	AE-L-LBMS-28	AE-L-LBMS-40	AE-L-LBMS-60	AE-L-LBMS-90
Input Wattage:	28W	40W	60W	90W
Lumens:	3,612 lm	5,080 lm	7,860 lm	11,970 lm
Equivalent:	100W MH	175W MH	200W MH	250W MH

Ordering Information

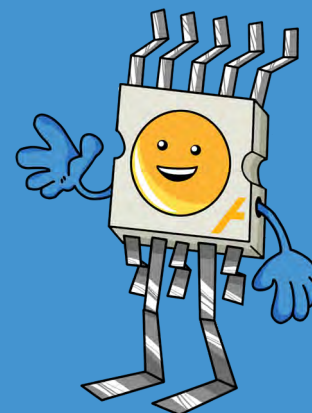
Example: AE-L-LBMS-60-130-50K-1-2-P-WP(3)-BZ

Wtg	Lumen Package	Color Temp.	Distribution	Input Voltage	Mounting	Options	Finish
28	130 - 130 lm/W*	30K - 3000K	1 - 120°*	1 - 100-277V*	F - Flush*	MS - Motion Sensor	BZ - Bronze*
40	145 - 145 lm/W	40K - 4000K		2 - 480V	P - Pendant Adapter	EI - Emergency Inverter	BL - Black
60		50K - 5000K*				(X)P - (X)-Pin Twist-Lock Base	W - White
90		57K - 5700K				(X = select one: 3,5, or 7)	GR - Gray
						WP(X) - Additional Whip	SP - Other
						(X = specified length in ft.; 2.67' is standard)	

*Standard

Additional Notes

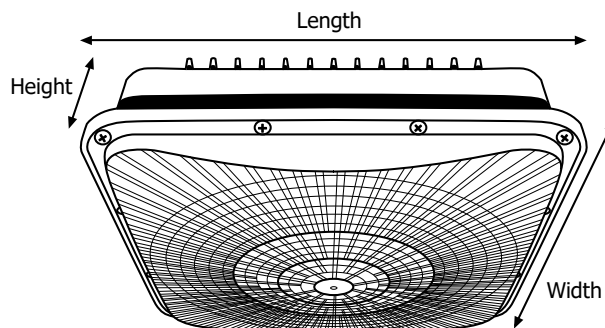
- Only 5000K are stocked locally, check for ETA's
- Warranty reduces to 5 YEARS for 480V models
- Step-down dimming motion sensors are for 100-277V models only
- Hot-start delays: .08 seconds (YG driver), 1 second (Mean Well driver)
- Additional charges apply for items under "Options" column and non-standard colors
- For custom paint other than bronze, a minimum purchase of 50 units is required



Lumen Output

System Watts	CCT	Lumens	lm/W	Lumens	lm/W
28	3000K	3,484	124	3,916	140
	4000K	3,556	127	3,997	143
	5000K	3,548	127	3,988	142
	5700K	3,612	129	4,060	145
40	3000K	4,862	122	5,551	139
	4000K	4,960	124	5,663	142
	5000K	5,040	126	5,754	144
	5700K	5,080	127	5,800	145
60	3000K	7,473	125	8,272	138
	4000K	7,680	128	8,501	142
	5000K	7,800	130	8,634	144
	5700K	7,860	131	8,700	145
90	3000K	11,365	126	12,390	138
	4000K	11,700	130	12,756	142
	5000K	11,880	132	12,952	144
	5700K	11,970	133	13,050	145

Fixture Dimensions and Weight



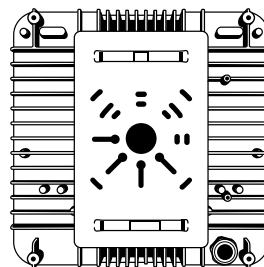
Length	Width	Height	Weight
12 in.	12 in.	3.94 in.	6 lb.
304 mm.	304 mm.	100 mm.	2.7 kg.

Installation

1. Connect the input and ground wires of the fixture to the power supply. **Brown is live. Blue is neutral. Green/Yellow is ground.**



2. Complete all electrical connections.
3. Secure the luminaire to the mounting plate with screws.
4. Close the luminaire, replace and tighten the housing screws.
5. Slide the hole of the mounting arm into the pole and tighten the hexagon screw.



Pictured:
LBMS mounting plate

This luminaire is designed for years with minimum care. For optimum performance, periodically clean the lens, with a mild, non-abrasive glass cleaner and soft cloth. DO NOT use solvents or cleaners containing abrasive agents. When cleaning the luminaire, make sure to have the power turned off and do not spray liquid cleaner directly onto the LED, socket, or wiring.

Accessories and Options



Phenix Internal Emergency
Inverter (18470X-2)
(optional)



Multi-Level
Motion Sensor
(optional)



3/4" Threaded Pendant
Adapter (optional)