

ARRLUX



LED STREET LIGHT
LUMA Series



LUMA Series

Certifications: UL/ CUL/ DLC/ LM79/ CB/ CE/ RoHS/ IK08

Housing

- Single-cast aluminum housing enables passive heat dissipation along the entire length of the luminaire.
- Modular design allows for easy installation, replacement and maintenance.
- Tool-less entry to driver compartment.
- IK08 rated.
- Meets 3G vibration per ANSI C136.31-2010.

Finish

- Corrosion resistant polyester powder painted 100µm thickness.
- Meets a 1000-hour salt spray certification per ASTM B117/ ISO 9227:2012.
- Standard colors: Grey, Black, Bronze and White.
- Customized colors are available.



Electrical/ Key Components/ Controls

- 120-277VAC and 12-24VDC available.
- Surge protection to 20kV/10kA per ANSI/IEEE C62.41.2-2002 available.
- High quality LEDs, driver and components, e.g. MOLEX, WAGO connectors.
- Multiple smart lighting control options are available, e.g. photocell, motion sensor, DALI, 1-10V.
- 3-pin/ 5-pin/ 7-pin photocell are available for light level adjustments.



LED & Optical Assembly

- Each PCB are mounted with a TVS (Transient Voltage Suppressors) to protect the LEDs from voltage transients induced by lightning and other transient voltage events.
- High-uniformity LED optics are constructed of durable optical polycarbonate that is impact and UV resistant.
- The metal plate provides double protection for the LED light engine and prolongs LED optics life.
- Multiple optical lenses are available.
- Each LED module are 100% tested prior to assembly which is IP67 rated.

Mounting

- Side-entry mounting.
- Adjustable for 1 5/8-2 3/8" (42mm-60mm) O.D. tenon.
- Brackets are available for different installations.



TECHNICAL PARAMETERS

Power	20-60W
Input	120-277 VAC or 220-240 VAC or 12-24 VDC
PF	>0.95
THD	<20%
L85	>60,000H
Operating Temperature	-40°C ~ +50°C
Efficacy	120-140lm/W
ANSI CCT	3000K/4000K/5000K/5700K
Min CRI	70* or 80 or 85

IP Rating	IP67
SPD	Optional
Certificate/Qualification	UL/ CUL/ DLC/ LM79/ CB/ CE/ RoHS/ IK08
DALI	Optional
1-10V	Optional
Photocell	Optional
Smart Control	Optional
Optic (IESNA)	Type II, Type III, Type IV, Type V
Color Options	Grey/Black/Bronze/White

ORDERING INFORMATION

MODEL (Nominal Power)		OPTIC LENS	CCT (ANSI)	OPTIONAL COLOR	LIGHTING CONTROL	ACCESSORY INFO
SID20 20W	SIA30D* 30W	T2M Type II Medium	30K 3045	★ GR Grey (RAL:7004)	00 Not required	Adaptor Bracket
SIA30 30W	SIB40D* 40W	T3L Type III Long	±175K	BK Black (RAL:9011)	01 Photocell	3/5/7-pin NEMA Receptacle
SIB40 40W		T4M Type IV Medium	★ 40K 3985	BZ Bronze (RAL:8014)	02 Motion Sensor	20KA Surge Protection Device
SIC60* 60W		T5U Average beam angle 10°	±275K	WH White (RAL:9010)	03 Photocell + Motion Sensor	Safety Cable
		T5V Average beam angle 25°	★ 50K 5028		04 DALI	Knife Switch
		T5W Average beam angle 40°	±283K		05 1-10V dimming	Emergency Power Supply (EPS)
		T5S Average beam angle 60°	57K 5665			
		T5M Average beam angle 90°	±355K			
		T5L Average beam angle 120°				
		T5X Average beam angle 150°				
		T5D Diffuser				

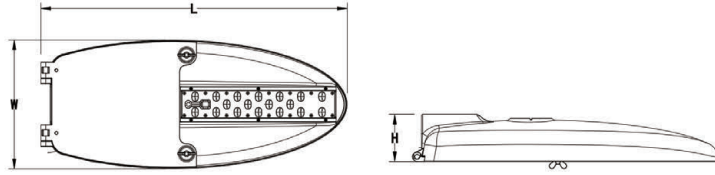
* DALI unavailable

★ Regularly stocked item

● Example 1: SIA30-T2M-50K-GR-00

● Example 2: SIB40D-T5U-50K-WH-00

PRODUCTS



Model	SID20/SIA30/SIB40/SIC60/SIA30D/SIB40D	Net Weight	4.37kg (9.63lbs)
LED Modules	1	Gross Weight	4.94kg (10.89lbs)
LEDs	18	Product Dimensions	545.9 x 229.8 x 84mm 21.49"X9.05"X3.31"
EPA (sq.ft.)	0.618	Carton Dimensions	600 x 265 x 150mm 23.62"X10.43"X5.91"

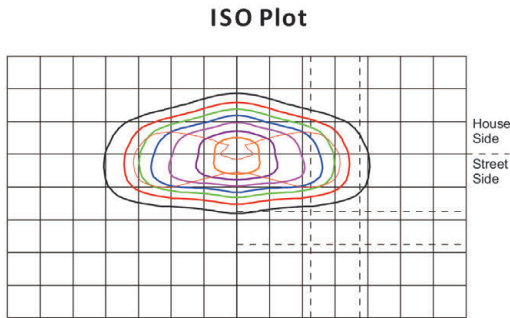
Model No.	System Power	Voltage	Drive Current	Luminous Flux		Efficacy(lm/W)
				3000K	4000/5000K	
SID20	20W	120-277VAC	350mA	2160lm	2400lm	120
SIA30	33W	120-277VAC	530mA	3564lm	3960lm	120
SIB40	42W	120-277VAC	700mA	4347lm	4830lm	115
SIC60	66W	120-277VAC	1050mA	6534lm	7260lm	110
SIA30D	33W	9-18VDC or 18-32VDC	500mA	3564lm	3960lm	120
SIB40D	42W	9-18VDC or 18-32VDC	700mA	4347lm	4830lm	115

PHOTOMETRICS

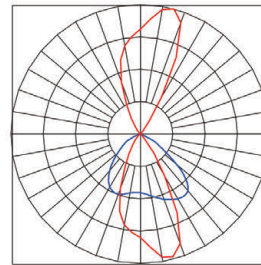
T2M

Type II
Medium

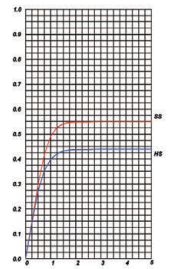
Typical use:
Street/Roadside



Polar Curve



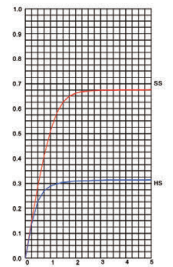
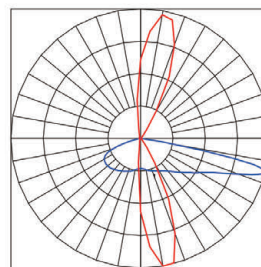
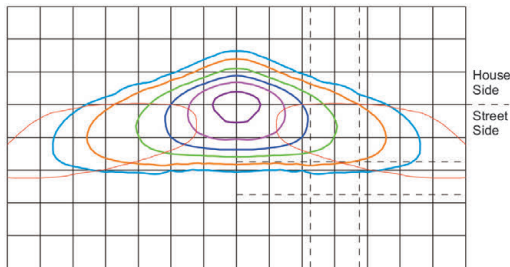
CU Graph



T3L

Type III
Long

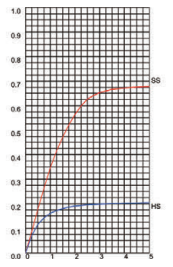
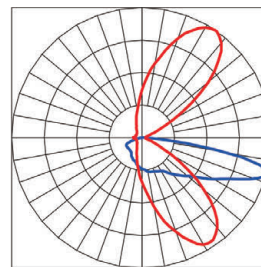
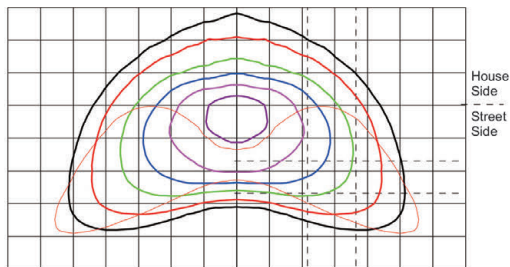
Typical use:
Street/Roadside



T4M

Type IV
Medium

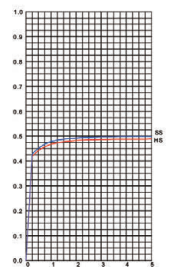
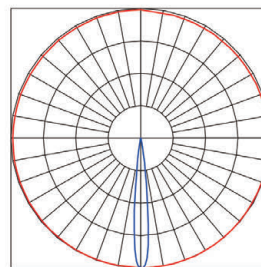
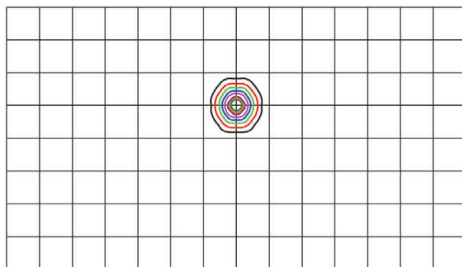
Typical use:
Highway/Multi-Lane



T5U

Average beam
angle 10°

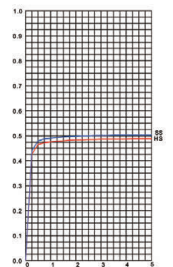
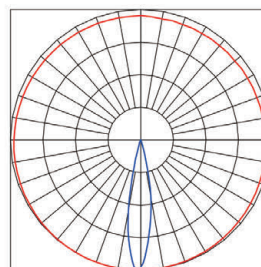
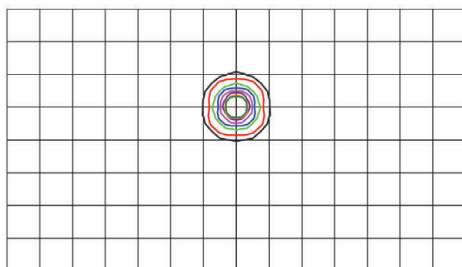
Typical use:
Stadium



T5V

Average beam
angle 25°

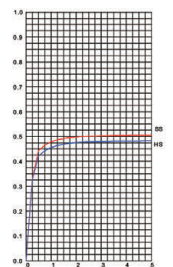
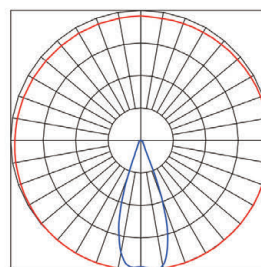
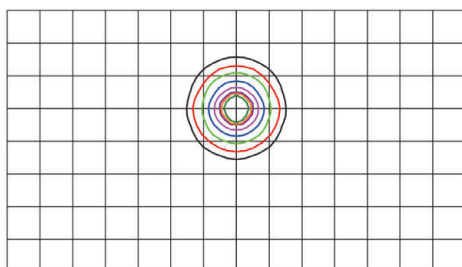
Typical use:
Stadium



T5W

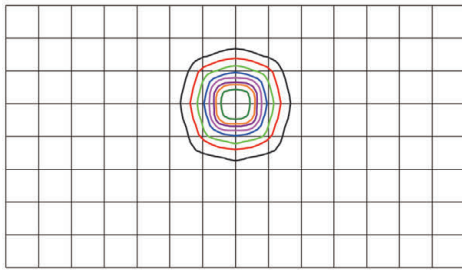
Average beam
angle 40°

Typical use:
Architectural

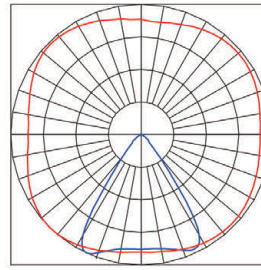


T5S
Average beam angle 60°

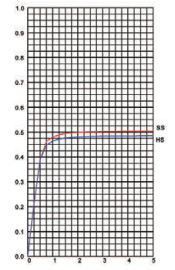
Typical use:
Industrial



Polar Curve

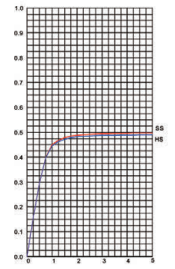
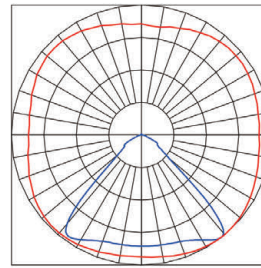
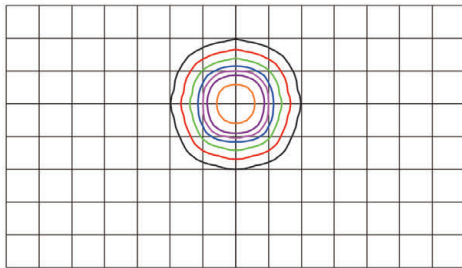


CU Graph



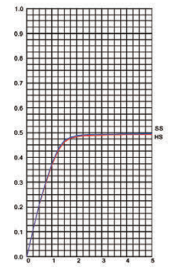
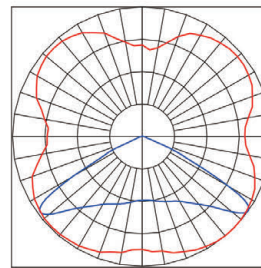
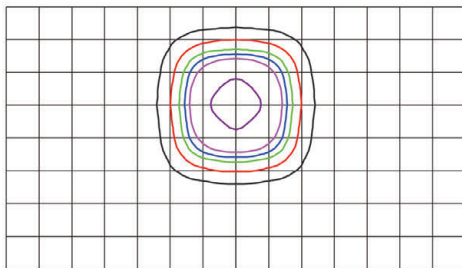
T5M
Average beam angle 90°

Typical use:
Industrial



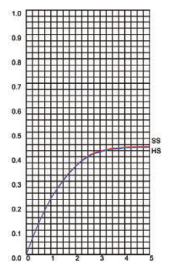
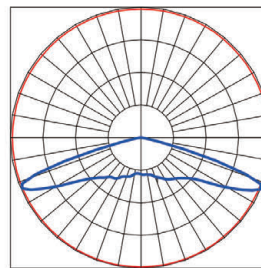
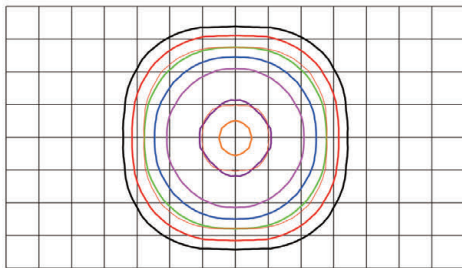
T5L
Average beam angle 120°

Typical use:
Gas station



T5X
Average beam angle 150°

Typical use:
Industrial
Undercover carpark



T5D
Diffuser

Typical use:
Industrial

