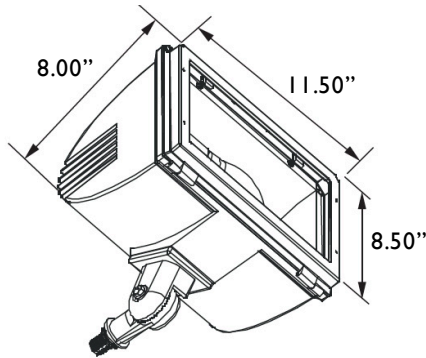


FLOODLIGHT.Q

All products feature Noribachi's exclusive Bespoke Engineered and Specifically Tailored (BEST) manufacturing methodology.

PRODUCT

CATALOG #:	TYPE:
PROJECT:	
COMMENTS:	DATE:
PREPARED BY:	

Product Information

The Floodlight.Q is a LED lighting fixture for large outdoor spaces.

This LED lighting fixture features robust die-cast aluminum housing with a flat tempered glass lens.

Applications: Municipal Areas, Office Building, Sports Fields and all outdoor floodlight applications.

Performance Summary

Lumens Range: 4,431 lm – 17,723 lm
 Lumens Per Watt (Typical): 141
 Light Engine: L70 Rated Lifetime of 100,000+ hours.
 CRI: Minimum 70 CRI. Custom CRI available upon request.
 CCT (Typical): 3000K, 4000K, 5700K
 Manufactured in the U.S. with parts from U.S. and imported.

Fixture Information

Housing: Die-cast Aluminum
 Lens: Tempered Glass Lens
 Mounting: Knuckle Mount Standard, Optional Slip-fitter
 Diffusion: None

Specifications*

Height: 8.50"
 Depth: 8.00"
 Width: 11.50"

*Specifications are subject to change without notification.

Electrical System Characteristics / Data

Standard AC input: 120-277 VAC
 EMI filter: 47 CFR, part 2, part 15
 Power factor: > 0.9
 Total harmonic distortion: < 20%
 Surge protection: IEC/EN 61000-4-5 EMC test standard

Electrical characteristics and performance data verified by Nationally Recognized Testing Labs (NRTL). For full reports and results, visit www.noribachi.com/reports.

Ordering Information

Sample Catalog Number: HEX-084-B-VW-MT-FLQ

LIGHT ENGINE	DRIVE CURRENT	COLOR TEMPERATURE	VOLTAGE	FIXTURE CODE	OPTIONAL UPGRADES	OPTIONAL BEAM SPREAD
HEX-021 HEX-042 HEX-063 HEX-084	B B B B	CW – COOL WHITE (5700K TYPICAL) NW – NEUTRAL WHITE (4000K TYPICAL) WW – WARM WHITE (3000K TYPICAL)	MT	FLQ – FLOODLIGHT.Q	SF – SLIP-FITTER MOUNT PTF – POST TOP FITTER STK – HEAVY DUTY GROUND STAKE V – VISOR SH – SHIELD WG – WIREGUARD COL [RAL] – CUSTOM FIXTURE COLOR COAT – MARINE GRADE FIXTURE COATING EPOXY – EPOXY COATING EM – EMERGENCY BATTERY BACKUP, 5W, 600 LUMENS, 90 MINUTES EMC – EMERGENCY BATTERY BACKUP COLD, 23W, 2000 LUMENS, 90 MINUTES SGR1 – 120-277V SURGE PROTECTOR SGR2 – 480V SURGE PROTECTOR PUL – PULSE WIRELESS CONTROLLER 010V – 1-10V DIMMING STEP – STEP DIMMING (UP TO 100W) STEP100 – STEP DIMMING (100-299W) STEP300 – STEP DIMMING (>300W) LVDIM – LINE VOLT DIMMING (<100W)	80D – OPTIONAL 80° BEAM SPREAD

Warranty:

Five-Year Limited Warranty. Optional 10-Year Manufacturer's Warranty Available. Full Warranty Terms Available At www.noribachi.com/products/warranty

WHEN APPROVED, THE SPECIFICATIONS OUTLINED IN THIS SPEC SHEET SHALL BECOME THE SPECIFICATION FOR THE MATERIAL TO BE DELIVERED BY NORIBACHI ON THE CITED PROJECT. AN AMENDED SPEC SHEET CAN BE PROVIDED BUT ONLY AFTER WRITTEN APPROVAL BY THE CUSTOMER IS RECEIVED. THIS DOCUMENT IS THE PROPERTY OF NORIBACHI AND CAN ONLY BE USED IN CONNECTION WITH MATERIALS FURNISHED BY NORIBACHI.

©2015-2016



FLOODLIGHT.Q

All products feature Noribachi's exclusive Bespoke Engineered and Specifically Tailored (BEST) manufacturing methodology.

CATALOG #:	TYPE:
PROJECT:	
COMMENTS:	DATE:
PREPARED BY:	

ELECTRICAL**Construction**

Die-cast aluminum housing and hinged top frame with textured bronze powdercoat finish over a chromate conversion coating. Tempered glass lens.

Optics

High brightness, high efficiency LEDs. Color temperature options include Cool White (5700K typical), Neutral White (4000K typical) Warm White (3000K typical) with minimum 70 CRI. Custom RGBW colors available. 120° beam angle standard. Optional 80° beam angle available.

Controls

Control options include Emergency Battery Backup (EM) and Emergency Battery Backup, Cold (EMC). Pulse Wireless Controller (PUL). 120-277V (SGR1), 480V (SGR2) Surge Protectors. 0-10V (010V), Line Volt (LVDIM) and Step (STEP, STEP100, STEP300) Dimming functionality.

Mounting

Knuckle mount available for mounting. Optional slip-fitter, post top fitter or heavy duty ground stake mounting.

Driver

Available in B drive current (525 mA). Highly reliable. Suitable for dry, damp and wet locations. Compliant to worldwide safety regulations for lighting.

Testing Compliance

UL 1598 Issued: 2008/09/17 Ed:3 Rev:2012/10/17 UL Standard for Safety Luminaires CSA C22.2#250.0 Issued: 2008/09/17 Ed:3 Luminaires; General Instruction No.1 2010/01/11, General Instruction No. 2 2012/10/17.

Electrical System

Surge protection meets 10KV/5KA per ANSI/IEEE C62.41. Driver meets maximum harmonic distortion (THD) of 20% and is ROHS compliant. Power Factor = > 0.9

Ambient Temperature

-40°C to +65°C (-40°F to +149°F).

Electrical Load

LIGHT ENGINE	DRIVE	DRIVE CURRENT (AMPS@120V)	DRIVE CURRENT (AMPS@277V)	DRIVE CURRENT (AMPS@480V)	SYSTEM POWER* (WATTS)
HEX-021	B	0.26	0.11	0.07	31.46
HEX-042	B	0.35	0.15	0.09	42.13
HEX-063	B	0.79	0.34	0.20	94.70
HEX-084	B	1.05	0.46	0.26	126.48
*1 Ideal Wattage					

Operating Characteristics (Typical @5700K CCT)

LIGHT ENGINE	DRIVE	LUMENS (T5)	INPUT POWER (WATTS)	LUMENS PER WATT	REPLACES
HEX-021	B	4,431	31.46	140.86	75-175W
HEX-042	B	6,258	42.13	148.55	100-200W
HEX-063	B	13,293	94.70	140.37	200-400W
HEX-084	B	17,723	126.48	140.13	300-525W

Manufacturing

Manufactured in beautiful Harbor City, CA. ARRA Compliant. NAFTA Compliant. Test and burn-in of 100% of all luminaires before shipment. No less than 8-years experience in manufacturing LED-based products.

Note

Specifications subject to change without notice.

Actual performance may differ as a result of end-user environment application. Actual wattage may differ by +/- 8%.

WHEN APPROVED, THE SPECIFICATIONS OUTLINED IN THIS SPEC SHEET SHALL BECOME THE SPECIFICATION FOR THE MATERIAL TO BE DELIVERED BY NORIBACHI ON THE CITED PROJECT. AN AMENDED SPEC SHEET CAN BE PROVIDED BUT ONLY AFTER WRITTEN APPROVAL BY THE CUSTOMER IS RECEIVED. THIS DOCUMENT IS THE PROPERTY OF NORIBACHI AND CAN ONLY BE USED IN CONNECTION WITH MATERIALS FURNISHED BY NORIBACHI.

©2015-2016



FLOODLIGHT.Q

All products feature Noribachi's exclusive Bespoke Engineered and Specifically Tailored (BEST) manufacturing methodology.

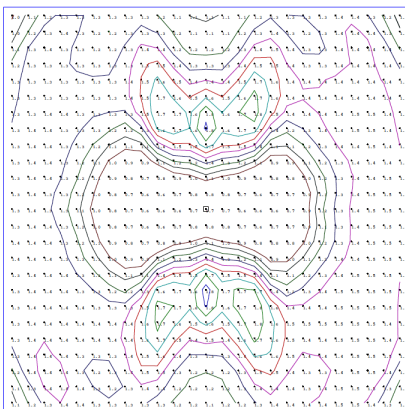
CATALOG #:	TYPE:
PROJECT:	
COMMENTS:	DATE:
PREPARED BY:	

PERFORMANCE / DISTRIBUTION

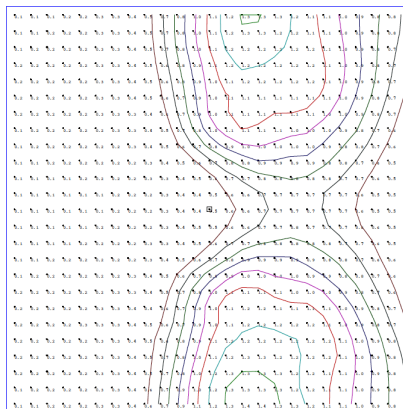
Power And Lumens By Light Engine							
DISTRIBUTION							
LIGHT ENGINE	DRIVE	CCT	T1 (LUMENS)	T2 (LUMENS)	T3 (LUMENS)	T4 (LUMENS)	T5 (LUMENS)
HEX-021	B	5700	4,354	3,450	4,209	3,988	4,431
HEX-042	B	5700	8,708	6,899	8,419	7,976	8,862
HEX-063	B	5700	13,062	10,349	12,628	11,963	13,293
HEX-084	B	5700	17,416	13,799	16,837	15,951	17,723

Type Distribution HEX-084

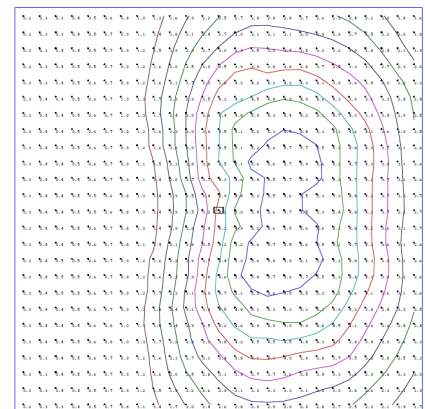
T-1



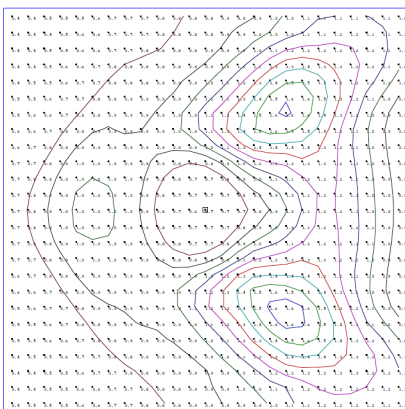
T-2



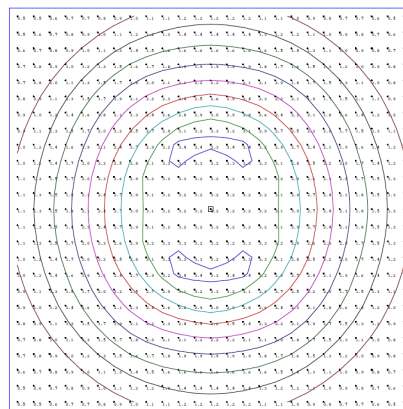
T-3



T-4



T-5



Distribution

- 120° Standard Beam Spread.
- 80° Optional Beam Spread available.
- Other Light Engine Type Distribution available upon request.

- IES Type Distributions are generated in an open space.
- Light Distribution images are mounted at 10 feet.

WHEN APPROVED, THE SPECIFICATIONS OUTLINED IN THIS SPEC SHEET SHALL BECOME THE SPECIFICATION FOR THE MATERIAL TO BE DELIVERED BY NORIBACHI ON THE CITED PROJECT. AN AMENDED SPEC SHEET CAN BE PROVIDED BUT ONLY AFTER WRITTEN APPROVAL BY THE CUSTOMER IS RECEIVED. THIS DOCUMENT IS THE PROPERTY OF NORIBACHI AND CAN ONLY BE USED IN CONNECTION WITH MATERIALS FURNISHED BY NORIBACHI.

©2015-2016



FLOODLIGHT.Q

All products feature Noribachi's exclusive Bespoke Engineered and Specifically Tailored (BEST) manufacturing methodology.

CATALOG #:

TYPE:

PROJECT:

COMMENTS:

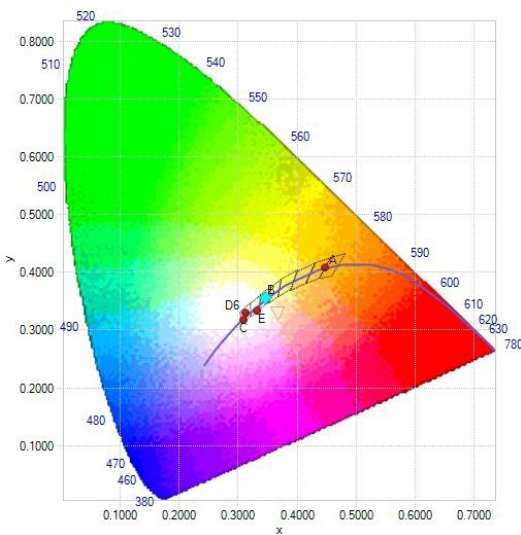
DATE:

PREPARED BY:

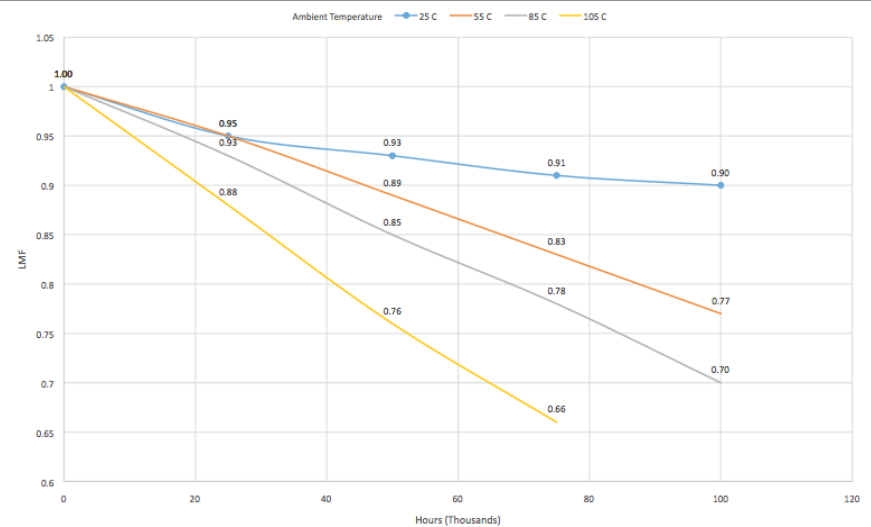
PERFORMANCE / DISTRIBUTION

CIE LUV BINNING CURVE

LIN-140 CIE 1932 - 2 Degree



Lumen Depreciation Chart



Lumen Maintenance Factors (B Drive)

AMBIENT	INITIAL LMF	25K HR PROJECTED LMF	50K HR PROJECTED LMF	75K HR PROJECTED LMF	100K HR PROJECTED LMF
25°C	1.00	0.95	0.93	0.91	0.90
55°C	1.00	0.95	0.89	0.83	0.77
85°C	1.00	0.93	0.85	0.78	0.70
105°C	1.00	0.88	0.76	0.66	n/a

Each temperature has an independent initial value. In accordance with IESNA TM021011, Projected Values represent interpolated value based on time durations that are within six times (6X) the IESNA LM-80-08 total test duration (in hours) for the device under testing (DUT) i.e. the packaged LED chip. In accordance with IESNA TM-21-11, Calculated Values represent time durations that exceed six times (6X) the IESNA LM-80-08 total test duration (in hours) for the device under testing (DUT) i.e. the packaged LED chip)

Luminaire EPA Chart

	Single	0.5
	ND-180°	1.0
	ND-90°	0.8
	NT-90°	1.7
	NT-120°	1.7
	NQ-90°	1.9

Note: Mounting changes fixture EPA. Please contact Noribachi for additional information.

Lumen Multiplier

AMBIENT TEMPERATURE	LUMEN MULTIPLIER
10°C	1.032
15°C	1.021
25°C	1.000
40°C	0.968
50°C	0.946

WHEN APPROVED, THE SPECIFICATIONS OUTLINED IN THIS SPEC SHEET SHALL BECOME THE SPECIFICATION FOR THE MATERIAL TO BE DELIVERED BY NORIBACHI ON THE CITED PROJECT. AN AMENDED SPEC SHEET CAN BE PROVIDED BUT ONLY AFTER WRITTEN APPROVAL BY THE CUSTOMER IS RECEIVED. THIS DOCUMENT IS THE PROPERTY OF NORIBACHI AND CAN ONLY BE USED IN CONNECTION WITH MATERIALS FURNISHED BY NORIBACHI.

©2015-2016



FLOODLIGHT.Q

All products feature Noribachi's exclusive Bespoke Engineered and Specifically Tailored (BEST) manufacturing methodology.

CATALOG #:	TYPE:
PROJECT:	
COMMENTS:	DATE:
PREPARED BY:	

OPTIONAL UPGRADES

For additional optional upgrades, please contact your Noribachi Account Manager.

DIMMING

ORDER CODE: 010V
ORDER CODE: STEP
ORDER CODE: STEP100
ORDER CODE: STEP300
ORDER CODE: LVDIM

Appearance And Specifications:

- 010V = 1 – 10V Dimming
- STEP = Step Dimming
- STEP100 = Step Dimming (100 - 299W)
- STEP300 = Step Dimming (>300W)
- LVDIM= Line Volt Dimming (<100W)



SURGE PROTECTOR

ORDER CODE: SGR1

ORDER CODE: SGR2

Appearance And Specifications:

- 120-277V Surge Protector
- 480V Surge Protector

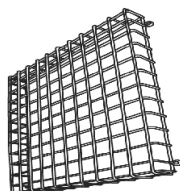


WIREGUARD

ORDER CODE: WG

Appearance And Specifications:

- Steel Wire
- Chromized Coating



VISOR

ORDER CODE: V

Appearance And Specifications:

- Aluminum
- Bronze Powdercoat Finish

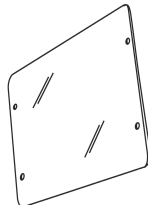


SHIELD

ORDER CODE: SH

Appearance And Specifications:

- Polycarbonate

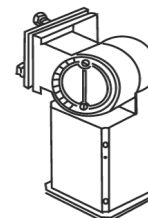


SLIP-FITTER

ORDER CODE: SF

Appearance And Specifications:

- Die-cast Aluminum
- Bronze or Custom Color



POST TOP FITTER

ORDER CODE: PTF

Appearance And Specifications:

- Die-cast Aluminum
- Three (3) 0.5" Coin Plugs



HEAVY DUTY GROUND STAKE

ORDER CODE: STK

Appearance And Specifications:

- Built-in Wiring Compartment



PULSE WIRELESS CONTROLLER

ORDER CODE: PUL

Appearance And Specifications:

- Lighting Control System
- Wall mounted or Portable



EMERGENCY BATTERY BACKUP

ORDER CODE: EM

Appearance And Specifications:

- Rain Tight For Outdoor Use
- 5W, 600 Lumens, 90 Minutes
- Must provide exact voltage requirements in order code



WHEN APPROVED, THE SPECIFICATIONS OUTLINED IN THIS SPEC SHEET SHALL BECOME THE SPECIFICATION FOR THE MATERIAL TO BE DELIVERED BY NORIBACHI ON THE CITED PROJECT. AN AMENDED SPEC SHEET CAN BE PROVIDED BUT ONLY AFTER WRITTEN APPROVAL BY THE CUSTOMER IS RECEIVED. THIS DOCUMENT IS THE PROPERTY OF NORIBACHI AND CAN ONLY BE USED IN CONNECTION WITH MATERIALS FURNISHED BY NORIBACHI.

©2015-2016



FLOODLIGHT.Q

All products feature Noribachi's exclusive Bespoke Engineered and Specifically Tailored (BEST) manufacturing methodology.

CATALOG #:	TYPE:
PROJECT:	
COMMENTS:	DATE:
PREPARED BY:	

OPTIONAL UPGRADES

For additional optional upgrades, please contact your Noribachi Account Manager.

EMERGENCY BATTERY BACKUP COLD

ORDER CODE: EMC

Appearance And Specifications:

- 23W, 2000 Lumens, 90 Minutes
- Must provide exact voltage requirements on order code



CUSTOM FIXTURE COLOR

ORDER CODE: COL-[RAL]

Appearance And Specifications:

- Choose a custom color for your fixture.
- RAL color code must be provided.



EPOXY COATING

ORDER CODE: EPOXY

Appearance And Specifications:

- Add epoxy coating to your fixture.



MARINE GRADE FIXTURE COATING

ORDER CODE: COAT

Appearance And Specifications:

- Add a Marine Grade coating to your fixture.
- Coating appearance is green.



WHEN APPROVED, THE SPECIFICATIONS OUTLINED IN THIS SPEC SHEET SHALL BECOME THE SPECIFICATION FOR THE MATERIAL TO BE DELIVERED BY NORIBACHI ON THE CITED PROJECT. AN AMENDED SPEC SHEET CAN BE PROVIDED BUT ONLY AFTER WRITTEN APPROVAL BY THE CUSTOMER IS RECEIVED. THIS DOCUMENT IS THE PROPERTY OF NORIBACHI AND CAN ONLY BE USED IN CONNECTION WITH MATERIALS FURNISHED BY NORIBACHI.

©2015-2016

