

LED STREET LIGHTS SERIES

Main Features

- Save 50%-75% electricity cost comparing with sodium street lights
- CREE XTE LED, high luminous efficiency and long life
- MEAN WELL high efficiency LED driver
- Universal voltage AC90-277V,AC347-528V available
- Fins cooling design, better cooling light quality, LED Tj< 85°C
- Excellent optical design, greatly improve the light utilization and evenness.
- Perfect combination with solar energy
- Available with Photocell/Sensor
- IP65 rating for outdoor use
- DLC、CE、RoHS certified,ETL pending
- 5years warranty

Model Number

LS-ST100W

LS-ST120W

LS-ST150W

LS-ST200W



UNIT:cd

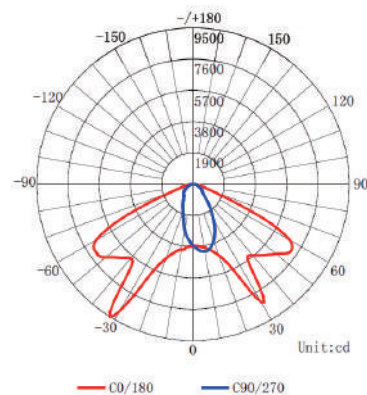
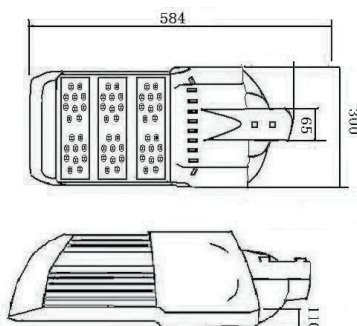
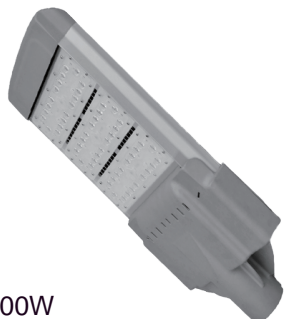
— V 0.0DEG PLAN

— H 0.0DEG PLAN

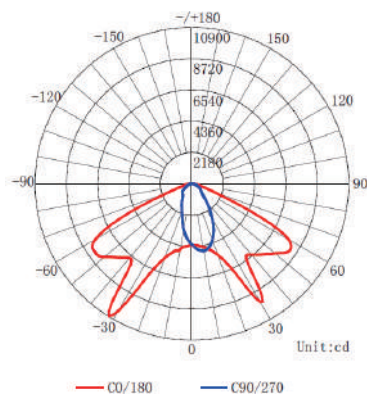
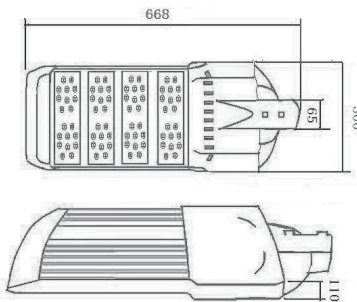
BeamAngle(50%):129.0 Deg

BeamAngle(10%):147.0 Deg

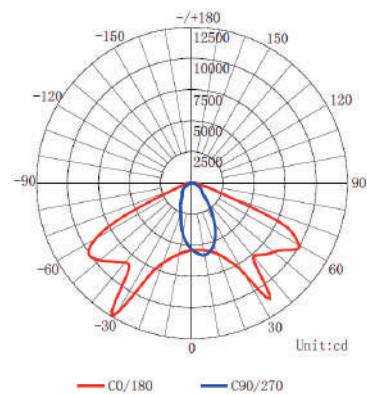
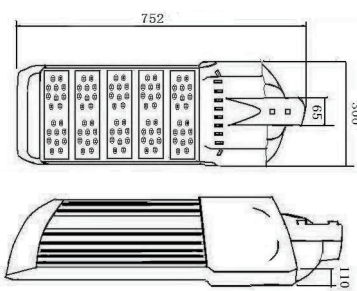
LS-ST100W



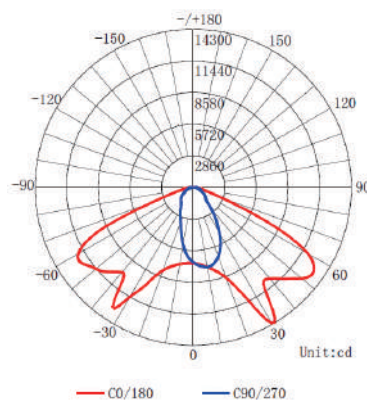
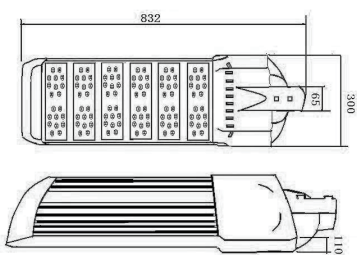
LS-ST120W



LS-ST150W



LS-ST200W



Main Parameters

Model#	LS-ST100W	LS-ST120W	LS-ST150W	LS-ST200W
Power	100W	120W	150W	200W
Output Lumen	10000lm	12000lm	15000lm	20000lm
Certificate	CE RoHS	DLC CE RoHS	DLC CE RoHS	DLC CE RoHS
Voltage	90~277VAC (180V-528V available)			
LED/Driver brand	CREE XTE LED/MEAN WELL Driver			
Material	Die-casting aluminum			
CCT	3000K-6500K			
Beam Angel	129Deg.(50%) 147Deg.(10%)			
PF	>0.9			
CRI	≥75			
IP Rating	IP65			
Working Temperature	-22°F ~140°F/-30°C ~60°C			
Lifespan	>50,000hrs			
Dimension	23*11.8*4.33 in / 584*300*110 mm	26.3*11.8*4.33 in / 668*300*110 mm	29.6*11.8*4.33 in / 752*300*110 mm	32.8*11.8*4.33 in / 832*300*110 mm

Applications

LED streetlight lights can be used for street lighting, Architectural Lighting,, Vehicular and pedestrian lighting, Public security lighting etc.

