

PRODUCT DESCRIPTION

The UKit offers a simple and universal build that allows the LED plates to be easily mounted in virtually any fixture. From downlights to parking lot lights, they can be installed in most applications.

FEATURES

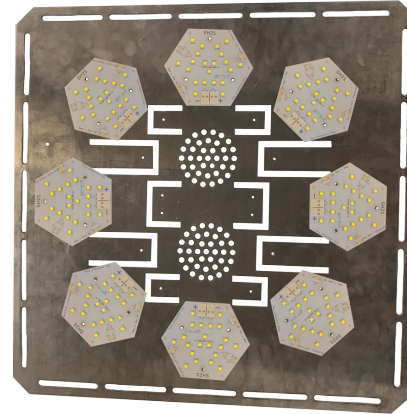
- All aluminum construction
- Easy tab mounting
- Simple build design
- Color temperature options

PERFORMANCE SUMMARY

- Lumens:** 31301
- Lumens per Watt:** 113
- CRI-Minimum:** >70
- CCT:** 3000K ,4000K ,5000K
- Dimming:** 0-10V (standard)
- Operating Environment:** -40C to 40C
- Optical Distribution:** 120 distribution
- Wattage:** 277

PERFORMANCE RATINGS AND CERTIFICATIONS

ETL ,DLC



KIT INFORMATION

- Finish:** Aluminum Finish
- Mounting:** Universal mounting kit with four 2.5", four 11" and four 20" magic tabs.
- Dimensions:** 20.0" x 20.0" x 3.21"
- Weight:** 8.72 lbs.
- Fits in with Internal Dimensions:** 20" - 60" x 20" - 60" x 5" (minimum)

ELECTRICAL SYSTEM CHARACTERIZATIONS

- Voltage:** 120 - 277VAC
- Dimming:** 0-10V (standard)
- Power Factor:** > 0.98
- Total Harmonic Distortion:** < 20%

WARRANTY

5 Year Standard Warranty Limited

ORDERING MATRIX

Family	Product	Board Shape	Watts	Color Temp	Voltage	Options	Mounting	Optical Distribution
Universal Kit	UKit	SHW168-277W	277W	30 = 3000K 40 = 4000K 50 = 5000K	MT = 120-277VAC HV = 480VACV	010V = 0-10V Dimming (standard)		

PHOTOMETRICS