

# YSL10 Solar Powered Obstruction Light

The solar panel comes with YSL10 provides power supply to the light, which makes YSL10 a self-contained and care-free light unit. Also, with the solar function, the light is easy to deploy to almost any condition and any emergency case. Robust body built and surface coating provides good protection against harsh environments.

## Compliant

ICAO Annex 14, Volume 1, 4th Edition, July 2004

FAA Advisory Circular AC150/5370-2F

YSL10 is equipped with an 8Ah NiMH rechargeable battery which could power the light up to 20 days when the weather is cloudy & rainy. NiMH battery is also a clean power source with no pollution. The NiMH battery is also easy to find almost anywhere.

YSL10 is also available with an optional on/off switch for storing and protect battery from overcharge and over-discharging.

## Features

- Ultra-light LEDs, energy saving
- Self-contained without outside power supply
- Maximum visibility distance 4 KM
- Once fully charged, it can work for up to 200 hours
- Auto-off after being packed for 18 hours

## Application

- High-rise building marking
- Telecom tower marking
- Road obstruction marking
- Navigation aid
- Port, dock entrance & walkway
- Buoy marking
- Offshore gas & oil platform



## Specifications

### LIGHT OUT-PUT

Intensity

**FLASHING**

● Red: >10cd ● Green:>20cd ● Yellow: >10cd  
○ White:>25cd ● Blue:>5cd

#### STEADY

● Red: >4cd ● Green: >8cd ● Yellow: >4cd  
○ White:>10cd ● Blue:>2cd

Nominal Night Range >4 KM

LED Color Available Red, Green, Yellow, White, Blue

Vertical Divergence 10 Degree

Horizontal Out-put 360 Degree

Illumination Ultra-bright LEDs

LED Lifespan 100,000 Hours

### OPERATION

Autonomy Flashing : 200 Hours / Steady : 100 Hours

On & Off Level 70/100 Lux

Flash Pattern 40FPM default (can be preprogrammed to a specified flashing rate upon customer request)

### POWER SUPPLY

Power Source Solar module, mono-crystalline silicon

Solar Efficiency 13.5%

Max. Power Out-put 1.8 Watts

Battery Type High-efficiency NiMH rechargeable battery

Battery Capacity 8 AH / 3.6V

Battery Replacement Yes, replaceable

### MECHANICAL STRUCTURE

Lens Polycarbonate, UV Stabilize

Body Die-casting Aluminum

Water-proof IP67

Weight 3.5 KG

Temperature Range -40C° ~ +55C°

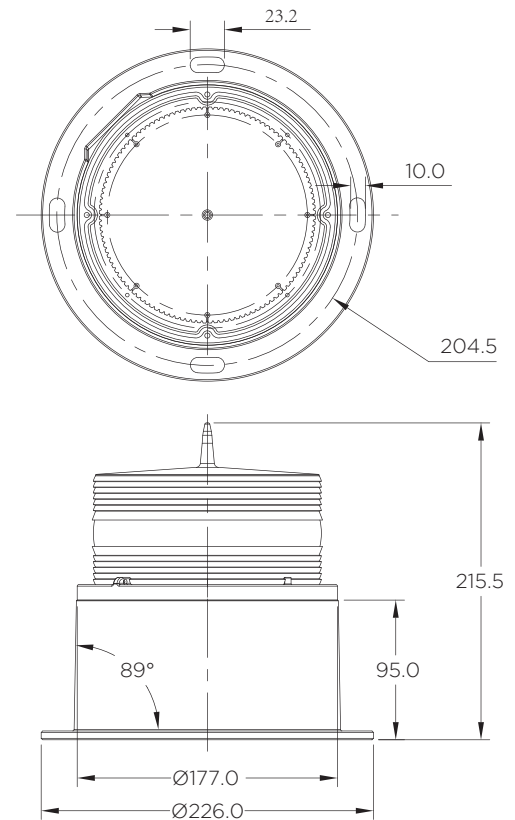
Dimensions 215.5mm H, 226mm Diameter

Warranty 5 years for light  
2 years for NiMH battery

**Note: when the light is in storage, please put it outside to charge the battery every 3 months**

### YUAN SHENG AMS mounting kit : Ordering Code

Series	Vertical tower leg diameter range	Horizontal tower leg diameter range
AMS3080	30-80mm	30-80mm
AMS30150	30-150mm	30-80mm



## Installation

